

# Are you on the Right Wavelength?

## Get in tune with your RF over fiber links

### 1 It's Not Rocket Science!

Choose wisely

RFoF links can be used for a number of applications, from teleports to timing.

*ViaLite* will have the RF band for you!



### 2 How far can you go with RFoF links?

*ViaLite* goes to great lengths to connect your antennas

You can't stretch fiber so make sure you know your required link distance.

*ViaLite* goes the extra mile connecting distances 0-600 km apart.

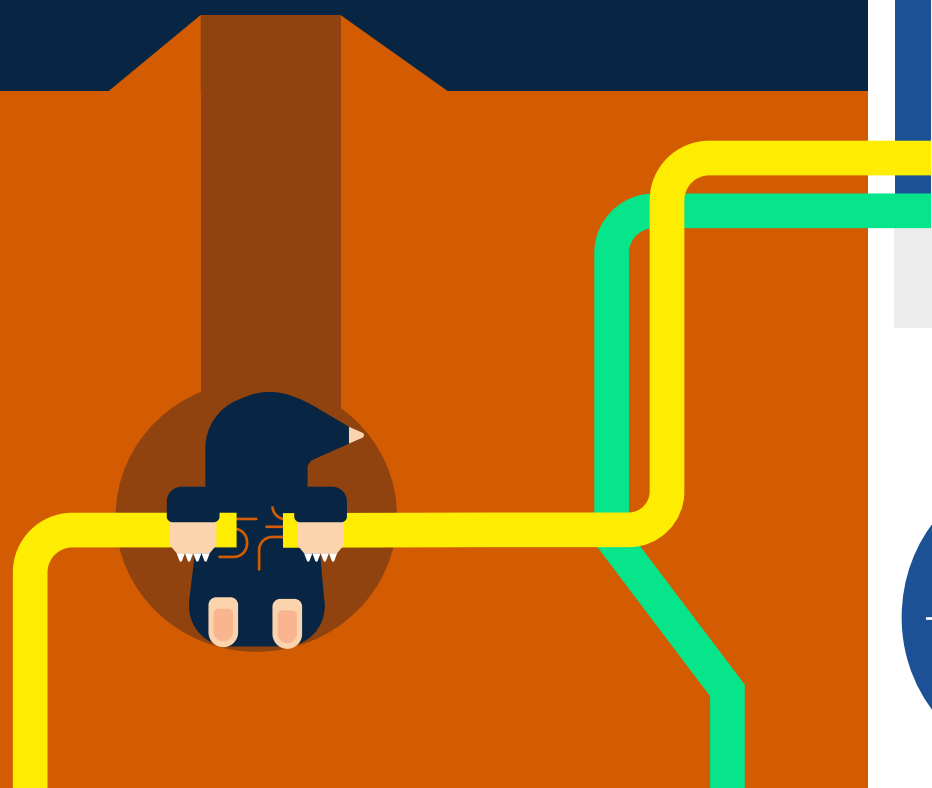


### 3 Don't Dig Yourself into a Hole!

Rack up your redundancies

The most common cause of primary link failure is the cable being damaged.

Ensure five nines reliability (99.999%) and make sure you have a redundancy system in place.

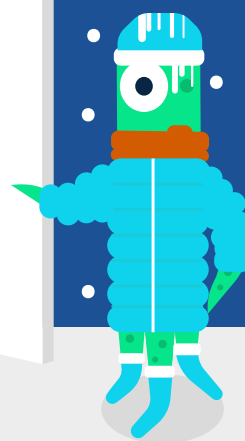
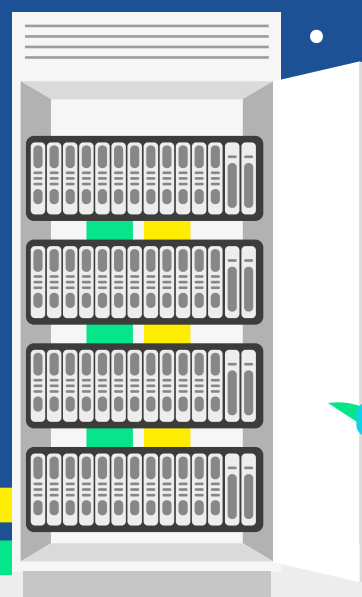


### 4 Come Rain, Snow or Shine

Consider your RFoF link housing solutions

Make sure cold waves and heat waves don't have an impact on your space waves!

For constant connectivity, consider fully weatherproof and secure enclosures or house your links indoors.



98% of organizations say a **single** hour of downtime costs over



\$100,000

### 5 Power-up!

Remember fiber doesn't carry power

Add a *ViaLite* powering function to your RFoF link check list.

Make sure that your LNBS and BUCs power up when you switch them ON so that you don't blow a fuse!

SOS



## Are you RFoF savvy?

Source: [www.vialite.com](http://www.vialite.com), [itic-corp.com](http://itic-corp.com)

**ViaLite**  
COMMUNICATIONS