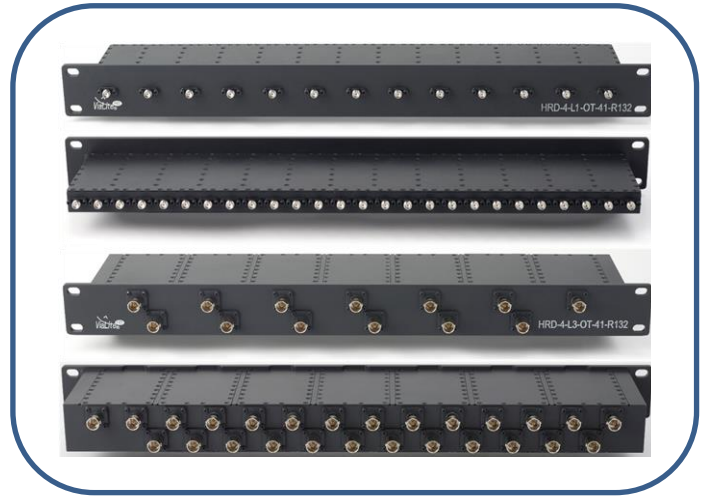


ViaLiteHD® – RF Splitters

HRD-4 RF Splitters

- 50 or 75 Ohm RF port
- DC pass through
- 700 MHz to 3 GHz range
- 10 W max forward power
- 1U 19" shelf
- 13 inputs 1:2 Split
- SMA or BNC options



The **ViaLiteHD** RF splitters have been designed specifically to save space in a 19" rack deployment and in the **ViaLite** 19" chassis by negating the need to have a splitter card installed. With enough capacity to locally split the output from a full 19" chassis, the splitters are ideal for L-Band redundancy applications. The solution comes in two types - 50 & 75 Ohm - which are fitted with either SMA or BNC connectors accordingly.

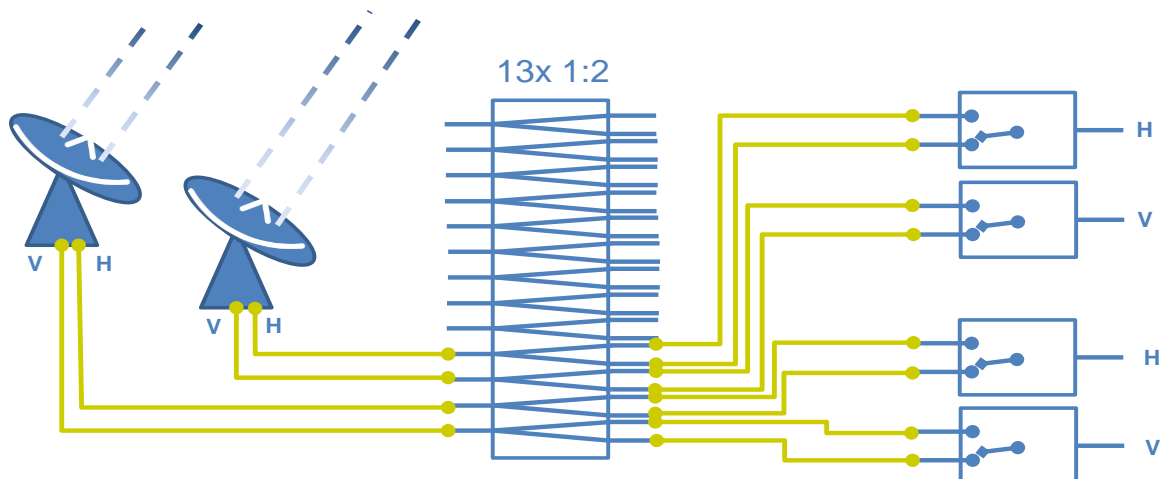
Applications

- L-Band satcom
- Redundancy
- GPS distribution
- Saving rack space
- Military communications

Related products

- HRK-1 19" chassis
- L-Band chassis cards
- 1U L-Band 10 MHz 1:8 Splitter
- 1U L-Band 10 MHz Diplexer
- GPS chassis cards

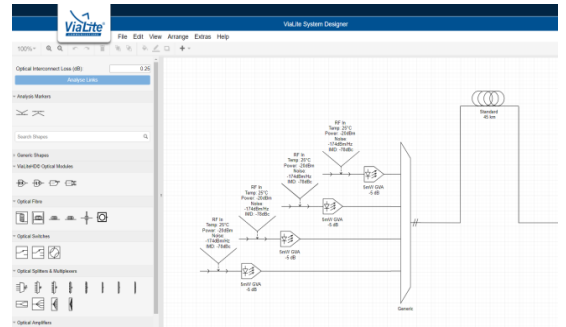
L-Band redundancy example



ViaLite System Designer

For complex designs where multiple DWDM products are required the System Designer tool is essential for predicting and validating performance results. The software uses a drag and drop approach from a pallet of products. Once designed, the analyzer can be ran to give end-to-end system results and these can then be saved as a detailed PDF.

Please ask our sales team for more information.



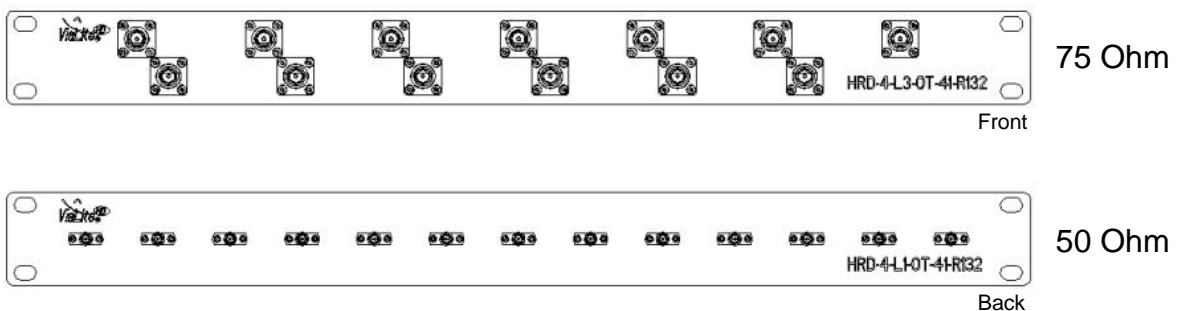
Popular products

HRD-4-L1-0T-41-R132 50 Ohm SMA
 HRD-4-L3-0T-41-R132 75 Ohm BNC

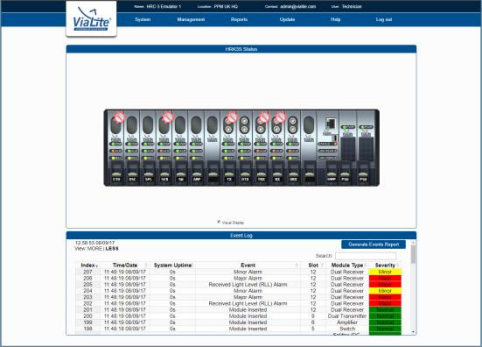
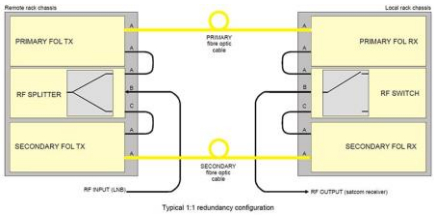


Technical specifications for 13x1:2 splitter

	1U 13x1:2 RF Splitter
Part number	HRD-4-L1-0T-41-R132, HRD-4-L3-0T-41-R132
Frequency range	698 MHz to 3 GHz
Insertion loss	<0.5 dB
Number of splitters / 1U rack	13
Splitter ways	1:2
VSWR	1.3 (Max)
Isolation	>20 dB
Power rating	10 W
Amplitude balance	+/- 0.2 dB
Impedance	50 or 75 Ohm
DC Pass through	13 v to 22 v
Connectors	SMA (50 Ohm) BNC (75 Ohm)
Operating temperature range	-35 °C to +75 °C
Storage temperature range	-40 °C to +85 °C

Connector positioning



Accessories

Type	Key features
<p>SNMP/Web Browser Card</p> 	<ul style="list-style-type: none"> • Easy to use graphical user interface (GUI) • Real time monitoring of card performance • Alarm monitoring and event logging • Control of gain adjustment • Compatible with all ViaLiteHD rack chassis and cards • Easy integration with network management systems (NMS) using management information base (MIB) tables • Actively manage redundancy switching • New RF cards can be automatically reprogrammed with the previous card parameters • Remote SNMP to local SNMP connection via optical fiber • Provides remote LAN 10/100 Ethernet link
<p>Dual Redundancy</p> 	<ul style="list-style-type: none"> • 1:1 redundancy for L-Band • Maximizes link up-time • Can be used to backup copper coax • Manual and automatic control via SNMP • Flexible configuration options • Other redundancy options available
<p>Rack Chassis</p> 	<ul style="list-style-type: none"> • 3U accepts up to 13 RF or Support cards, plus an SNMP card and dual power supplies • A 1U chassis accepts up to 3 RF or Support cards or 2 cards and an SNMP card (with dual power supplies) • Up to 26 channels per 3U chassis (using dual RF cards) – reducing the amount of rack space required • Blind mate option • All modules hot-swappable and auto-reconfigure with SNMP option • On-card LNB and BUC power options • Power fed through rear chassis connector to card Bias Tees • System can be monitored and controlled remotely via SNMP using a web browser
<p>Outdoor Enclosures</p> 	<ul style="list-style-type: none"> • CE approved and EMC compatible • IP rated and NEMA approved • Plug and play format • Suitable for harsh environments • All modules hot swappable • Dual redundant power options • Interface for monitor and control (M&C) systems