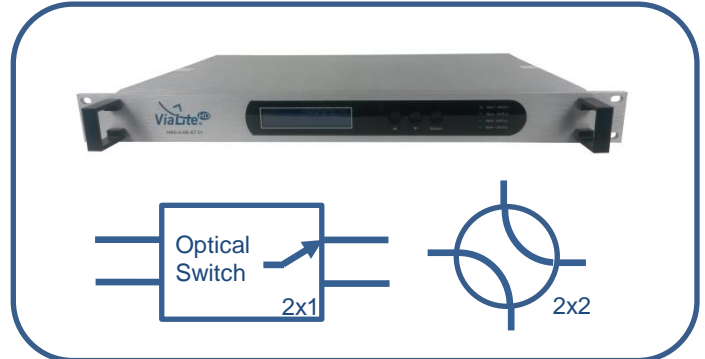


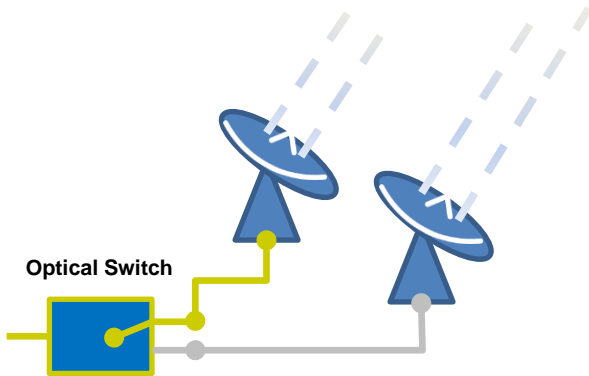
ViaLiteHD® – Optical Switch

Optical Switch

- DWDM & CWDM support product
- 2x1 & 2x2 way optical switch
- Low insertion loss
- SNMP and serial control
- Front panel controls
- Fast switching time (20 ms)
- Standard 5-year warranty



The **ViaLiteHD** Optical Switch has been designed specifically for fast switching between local and remote locations in Ka-Band satcom diverse antenna applications. The 2x2 switch allows system configurations to be switched between local and diverse sites as well as having the capability of feeding the off-air optical signals into a monitoring receiver when not being used. This allows the user to have an alarm status of their off-air channels thus improving system confidence and availability. Standard 2x1 switches are also available.



Applications

- Ka-Band diversity systems
- Fixed satcom earth stations and teleports
- Broadcast facilities
- VSAT hubs (IP gateways)
- Television Receive-Only (TVRO)

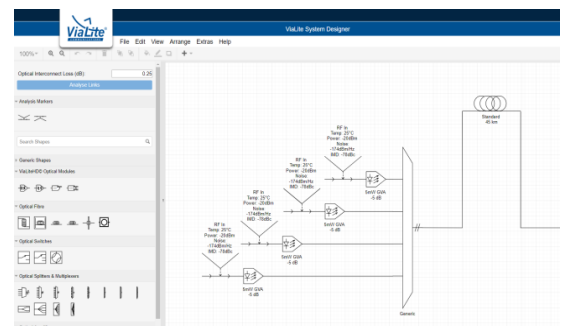
Related Products

- 50 km CWDM systems
- Optical Amplifiers (EDFA)
- Delay Lines
- DCMs
- Lossless Optical Splitter

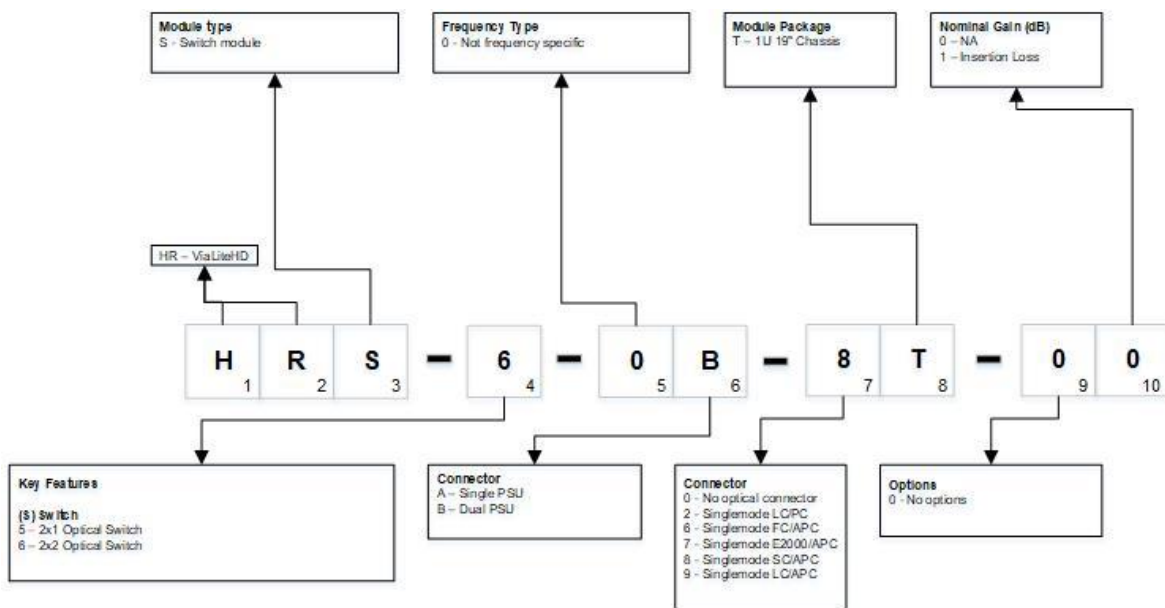
ViaLite System Designer

For complex designs where multiple DWDM products are required the System Designer tool is essential for predicting and validating performance results. The software uses a drag and drop approach from a pallet of products. Once designed, the analyzer can be run to give end-to-end system results and these can then be saved as a detailed PDF.

Please ask our sales team for more information.



Product configurator



Popular products

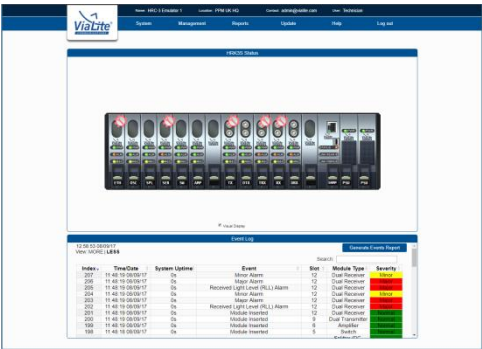
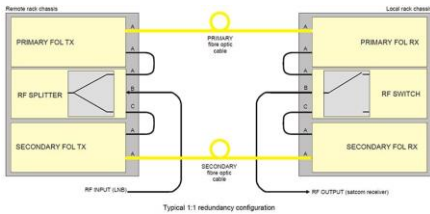


HRS-5-0B-8T-01

Switch Module, 2x1 Optical switch, Dual PSU, Singlemode SC/APC

Technical specifications for 2x2 switch

Performance		Index			Options
		Min.	Typ.	Max.	
Optical	Wavelength range (nm)	1528		1620	
		1260		1620	
	Insertion loss (dB)		1.6	2	
	Return loss (dB)	55	60		
	Switch cross talk (dB)	55	60		
	PDL (nm)			0.2	
	Switching time (ms)			20	
	Fiber type	9 / 125			
Optical connector	FC/APC, FC/PC			Optional SC, LC	
General	10/100M Ethernet interface	RJ45			
	Networking protocol	SNMP			
	Communication interface	RS232			
	Power supply (VAC)	90		265	50 / 60 Hz
	Work temp (°C)	-20		65	
	Storage temp (°C)	-40		85	
	Operating relative humidity (%)	5		95	
	Size (W) x (D) x (H)	19 x 10 x 1.75 inches - 483 x 254 x 44 mm			

Accessories

Type	Key Features
<p>SNMP/Web Browser Card</p> 	<ul style="list-style-type: none"> • Easy to use graphical user interface (GUI) • Real time monitoring of card performance • Alarm monitoring and event logging • Control of gain adjustment • Compatible with all ViaLiteHD rack chassis and cards • Easy integration with network management systems (NMS) using management information base (MIB) tables • Actively manage redundancy switching • New RF cards can be automatically reprogrammed with the previous card parameters • Remote SNMP to local SNMP connection via optical fiber • Provides remote LAN 10/100 Ethernet link
<p>Dual Redundancy</p> 	<ul style="list-style-type: none"> • 1:1 redundancy for L-Band • Maximises link up-time • Can be used to backup copper coax • Manual and automatic control via SNMP • Flexible configuration options • Other redundancy options available
<p>Rack Chassis</p> 	<ul style="list-style-type: none"> • 3U accepts up to 13 RF or Support cards, plus an SNMP card and dual power supplies • A 1U chassis accepts up to 3 RF or Support cards or 2 cards and an SNMP card (with dual power supplies) • Up to 26 channels per 3U chassis (using dual RF cards) – reducing the amount of rack space required • Blind mate option • All modules hot-swappable and auto-reconfigure with SNMP option • On-card LNB and BUC power options • Power fed through rear chassis connector to card Bias Tees • System can be monitored and controlled remotely via SNMP using a web browser
<p>Outdoor Enclosures</p> 	<ul style="list-style-type: none"> • CE approved and EMC compatible • IP rated and NEMA approved • Plug and play format • Suitable for harsh environments • All modules hot swappable • Dual redundant power options • Interface for monitor and control (M&C) systems