

## ViaLiteHD® – GNSS Antennas

### GNSS Antennas and Mounting Kit

- 2 Antennas available:
  - High Performance Antenna
  - GNSS Timing Antenna
- Support for GPS, GLONASS, GALILEO and BEIDOU
- Kit for wall mounting and pole mounting included
- Compatible with all *ViaLite* GPS Links



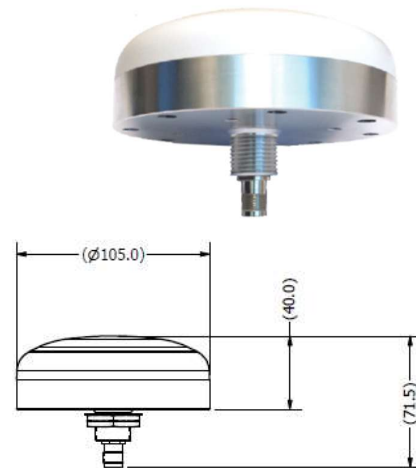
**ViaLiteHD** GNSS timing reference antennas are specifically designed for long-lasting, trouble-free deployments in a variety of demanding applications. The low noise, high gain amplifiers are well suited to address attenuation issues associated with applications requiring higher loss RF coaxial cable or weaker signal locations. All antennas include advanced filtering circuitry to provide superior out-of-band rejection and interference management. Mechanically, they are IP rated for harsh outdoor conditions and dome shaped to assist water run-off. These antenna are a good accompaniment to the **ViaLiteHD** GPS transmitter units which can also provide the necessary DC voltage feed.

#### 76940

This is the High Performance antenna with high gain and multi-GNSS capabilities.

GNSS systems supported:

- 1150-1290 MHz
  - GPS L2 and L5
  - GALILEO E5A, E5B and E6
  - GLONASS L2 and L3
  - BEIDOU B2 and B3
- 1500-1615MHz
  - GPS L1
  - GALILEO E1
  - GLONASS L1
  - BEIDOU B1 and B1-2.



#### 76941

This is a GNSS Timing Antenna with low noise and high gain designed for long lasting installations. It also features integrated on-board lightning protection removing the need for in-line surge suppressors downstream

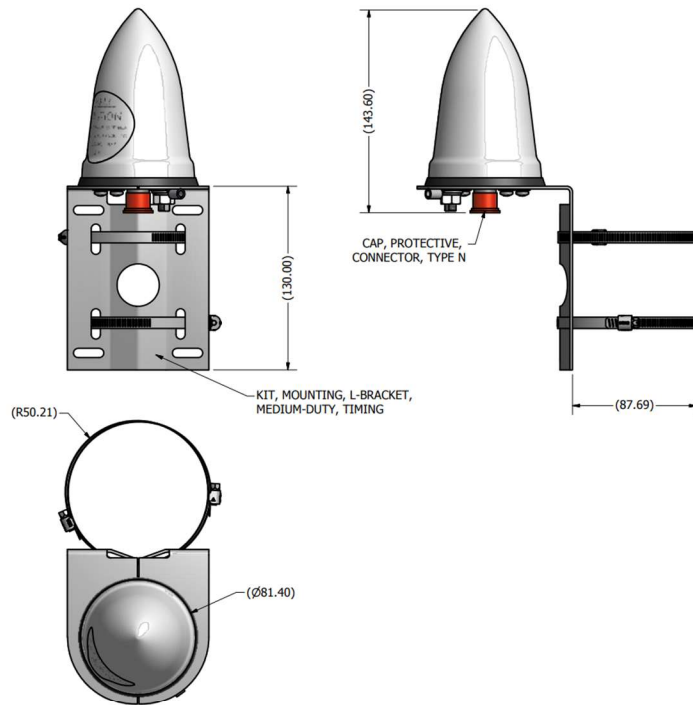
GNSS systems supported:

- 1565 – 1585 MHz
  - GPS L1
  - GALILEO E1
  - GLONASS L1
  - BEIDOU B1



## Mounting Hardware

Mounting Kit L-Bracket Medium-Duty, PPM Part Number 51063



## Technical Specification

	Units	76940	76941
Constellations:			
GPS		L1,L2,L5	L1
GALILEO		E1,E5A,E5B,E6	E1
GLONASS		L1,L2,L3	L1
BEIDOU		B1,B1-2,B2,B3	B1
LNA gain	dB	40 dB $\pm$ 5 dB	40 dB $\pm$ 4 dB GPS L1/GALILEO E1 38 dB $\pm$ 4 dB GLONASS L1/BEIDOU B1
Nominal Impedance	Ohm	50	50
Polarization		Right hand circular	Right hand circular
VSWR	(typ)	<2.0:1	<2.0:1
Noise Figure	dB (typ)	3.0	<2.5
DC Voltage	V DC	2.5-12	3.3-9
DC Current	mA	37 (typ) 50 (max)	<40
Out of Band rejection		> 80 dB @ $f < 1050$ MHz > 30 dB @ $f < 1125$ MHz > 70 dB @ $f > 1350$ MHz > 70 dB @ $f < 1450$ MHz > 30 dB @ $f > 1690$ MHz > 80 dB @ $f > 1730$ MHz	$\geq 60$ dB @ $\pm 50$ MHz off center frequency
Antenna Dimension		105.0 mm D x 40.0 mm H 4.13" D x 1.57" H	81 mm D x 184 mm H 3.20" D x 7.25" H
Antenna Weight		0.386 kg 0.85 lbs	0.34 kg 0.75 lbs
Connector		TNC Female	N-type Female
Included with the Antenna		51063 – L-Bracket mounting kit Coax Cable 1m TNC to N-Type	51063 – L-Bracket mounting kit